

Plot in Puerto del Almendro, Benahavis

Reference: 85500162P



Bedrooms: by request

Bathrooms: by request

M²: 2,977

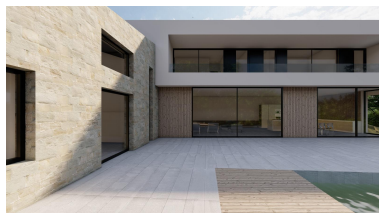
Price: 950,000 €

Status: Sale

Property Type: Plot

Parking places: by request

Printing day : 3rd June 2026



Overview: An excellent opportunity to acquire a buildable plot located in the sought after residential area of Puerto de los Almendros in Benahavís. The plot measures approximately 3,000 square metres and is situated in a peaceful and established environment surrounded by nature and close to golf courses, while remaining within easy driving distance of Marbella, San Pedro and the coast.

The property is offered with approved project documentation, allowing the buyer to proceed directly with the construction process without delays related to planning or zoning approvals. This makes the plot particularly attractive for those wishing to build a private villa or a custom designed home in a quiet yet prestigious location. The area is known for its mountainside setting, privacy and high quality of life, combined with good access to golf, services and international schools within a short drive.

Puerto de los Almendros is a well regarded residential community with consistent demand and strong long term value potential. An ideal opportunity for buyers seeking a buildable plot with approved documentation in a tranquil and exclusive part of Benahavís.

Features:

New development, Golf